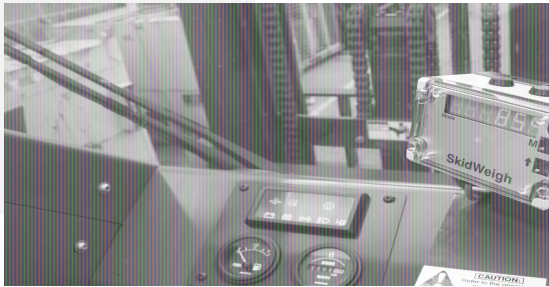


SkidWeigh ED2

Lift Truck Check Weighing Scale

Check Weighing Made Easy

The SkidWeigh ED2 mobile lift truck scale is the industry leading weighing benchmark for performance, technology and design. Engineered with the operator in mind the system is easy to use, accurate to +/-1% of weighing capacity, and capable of withstanding the most demanding and challenging material handling environments. The SkidWeigh ED2 can be easily installed in the hydraulic lift circuit of any material handling equipment regardless of voltage and does not alter the capacity plate. Once installed the system can be calibrated by anyone in 5 minutes. Once complete the system software takes over and the SkidWeigh ED2 is ready to go to work.



Increase Profits

Moving pallets in a warehouse and using a remote floor scale to collect weight data costs time and money. Using the SkidWeigh ED2 allows users to check weigh the product at source of lift. This saves time, money, and space.



Enhance Safety

Using the SkidWeigh ED2 not only provides information about the weight of the load lifted but also its relation to the capacity of the vehicle. This gives managers and operators alike piece of mind and security.

Options for all Applications

2X: 2 independent weighing channels. Ideal for quick disconnect clamps.

AT: Accumulative totalling. The ability to add loads and reset to 0 when finished.

SM: Audio or visual overload notification. Perfect for ensuring lift truck capacity.

SL: Digital display in percentage of vehicle capacity. Increased safety awareness.



Technical Specifications

Specifications



Digital Indicator



Pressure Transducer



Universal Mounting Bracket

- Voltage: 12 to 55 VDC
- Operating Current < 75mA
- A/D Converter 10 bit Resolution
- Output Relay 2A, SPDT
- Internal Buzzer: 80 dBA/10cm
- LED Display: 6 digit Super Bright 0.56" Digit Height, LED Light for Busy/Ready and Bluetooth Mode
- RS-232 Port
- Technology: Flash Microcontroller
- ABS Enclosure: 120x80x55 mm
- Weight: 350 g (without bracket)
- IP65 NEMA 4X, UL Listed Silicon Sponge Gasket
- Operating Temperature: -40 to +70C
- Transducer: Stainless Steel AIDI303
- Port Connection: Male 1/4"-18 NPT
- Built in Pressure Snubber
- Reverse polarity protection
- Voltage/Short Circuit protection
- Shock: IEC 60068-2-6
- Insulation voltage: 500 VDC
- Response time: <1 ms
- Load cycle: <1 00Hz
- EMC conformity:

Standard Features

- Accuracy: +/- 0.1% to 1% of vehicle lifting capacity.
- Weighs up to 50000 lb. or kg.
- Super Bright LED Display
- 6 digit Red Super Bright LED Display
- Graduation 1,5 and 10 (default 5)
- Operating temp: -40C / +70C
- Swiss Made Pressure Transducer
- Built in Short Protection
- Automatic two button setup

Available Options

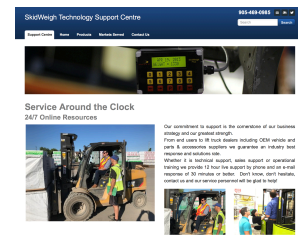
- **2X:** Two independent weighing channels
- **AT:** Accumulative Totalling
- **SM:** Audio or visual overload warning
- **SL:** Load weight displayed in % of vehicle lifting capacity
- **EP:** Electric Pallet Truck (See EP Series)
- **PR:** For print options see ED2-Elite

SkidWeigh ED2 Advantages

- Installs in approximately 2 hours
- Does not derate the lifting capacity or require an OEM to re-plate
- Does not require maintenance or on going calibration
- **'Lift-N-Weigh'** operation, no buttons or interruptions to operations
- Weighing accuracy +/- 1% of rated capacity or better
- Built specifically for material handling vehicles
- IP65 rating suitable for the harshest environments
- Modular design allows for enhanced options and customization
- 2 Year Warranty
- Live and Online Support



Technical Support



On Line Support
www.skidweigh.com

Dealer