



ZEBRA[®]

QLn Healthcare Printers

Quick Start Guide



www.zebra.com/qln320hc-info

Contents

In the Box.....	3
Overview.....	4
Overview cont.....	5
Removing and Installing the Battery.....	6
Charging the Smart Battery.....	7
UCLI72-4 Quad Charger.....	7
Smart Charger-2 (SC2) Single Battery Charger.....	8
AC Power Adapter (included in kit p/n P1031365-024.....	9
Ethernet Cradle.....	10
QIn-EC.....	10
QIn-EC4.....	10
Loading Media.....	11
Loading Media (Peeler Activated).....	12
Cable Communications.....	13
Via a Terminal.....	13
Via a Computer.....	13
Printer Controls.....	14
Cleaning the Printers.....	15
Accessories.....	15
Hand Strap.....	15
Shoulder Strap.....	15
Soft Case.....	15
Accessories cont.....	16
Belt Clip.....	16
Product Support.....	17



Always refer to the Important Safety Information data sheet shipped with each printer and the Technical Bulletin shipped with each battery pack. These documents detail procedures to ensure maximum reliability and safety while using this printer.

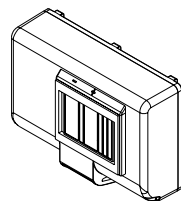
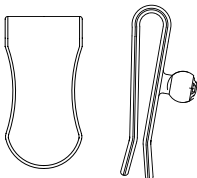
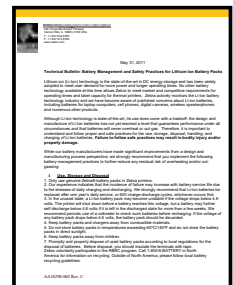
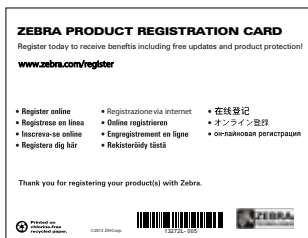
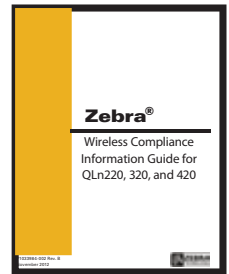
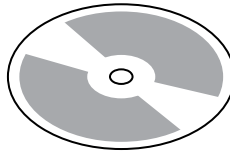
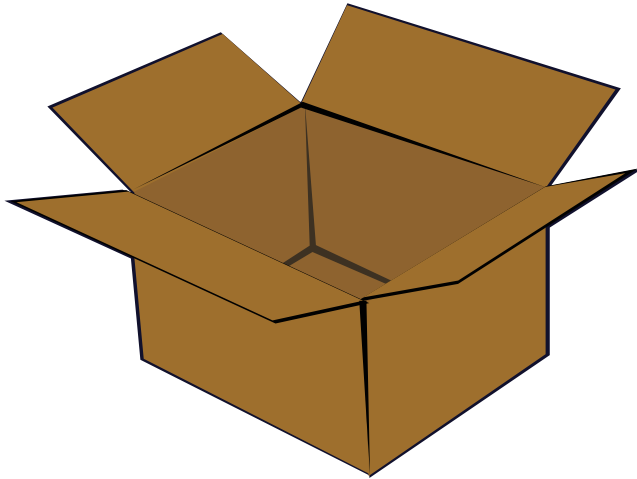


Works with:

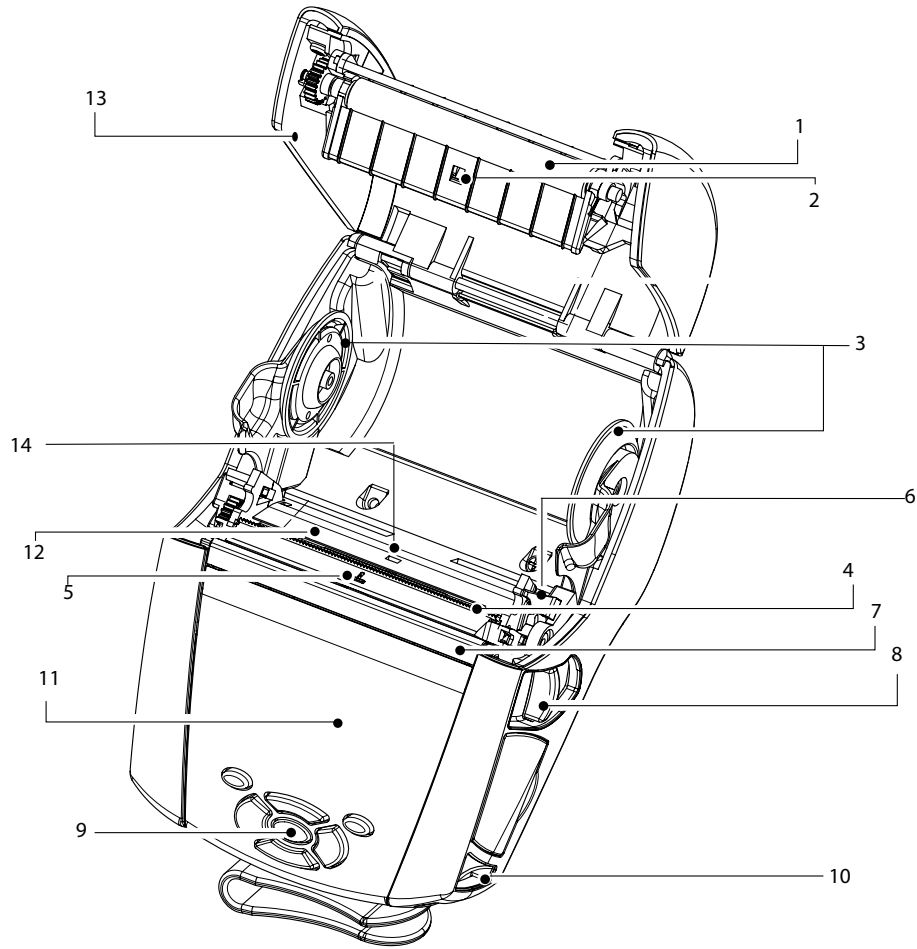


Complete and current documentation for the printers is provided by the QLn Series User Guide available at: www.zebra.com/manuals.

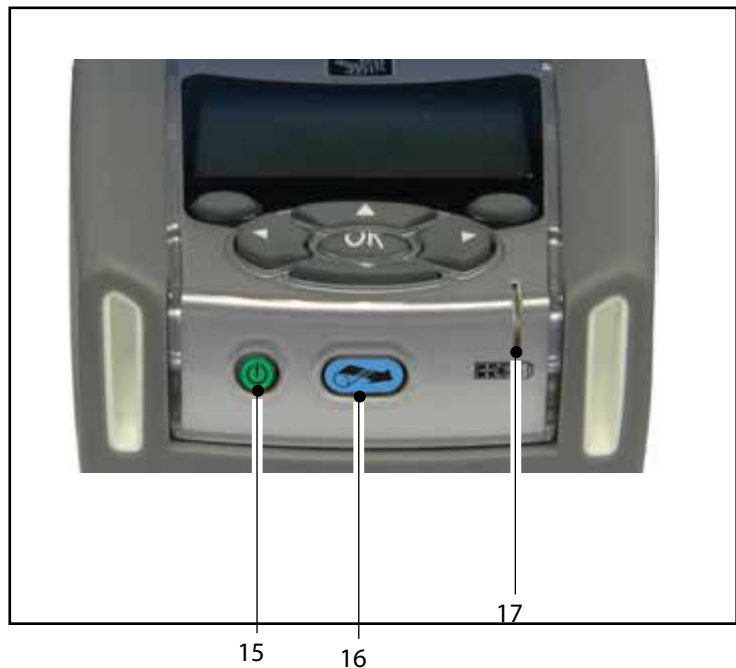
In the Box

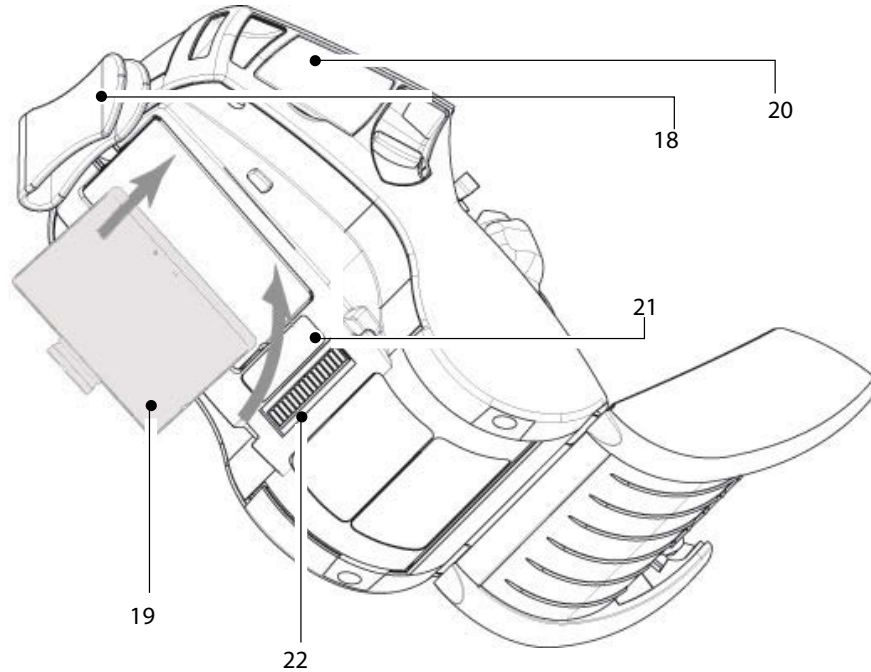


Overview



1. Platen Roller
2. Bar Sensor
3. Media Support Disks
4. Tear Bar
5. Label Present Sensor
6. Peeler Lever
7. Peeler Bail
8. Media Cover Button
9. Keypad
10. Strap Post
11. LCD Screen
12. Printhead
13. Media Cover
14. Gap Sensor
15. Power Button
16. Feed Button
17. LED Charge Indicator

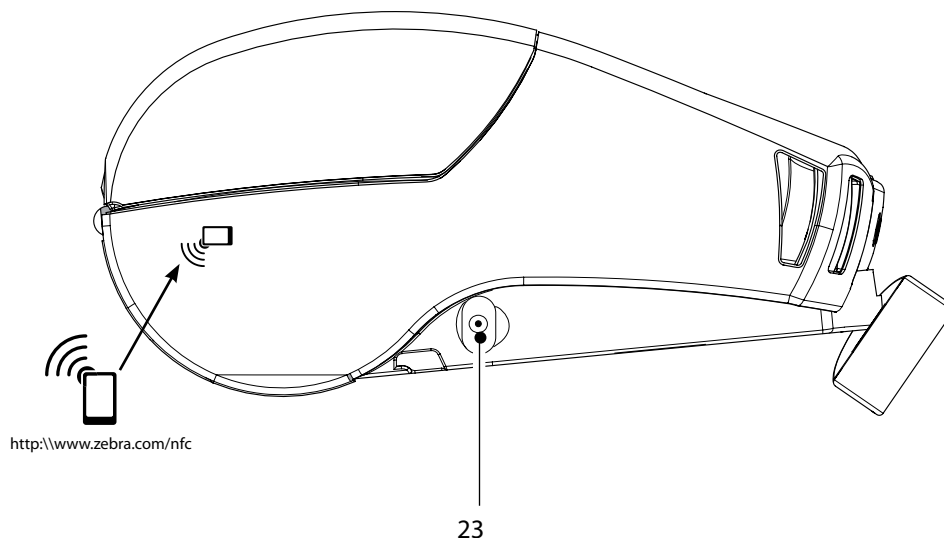




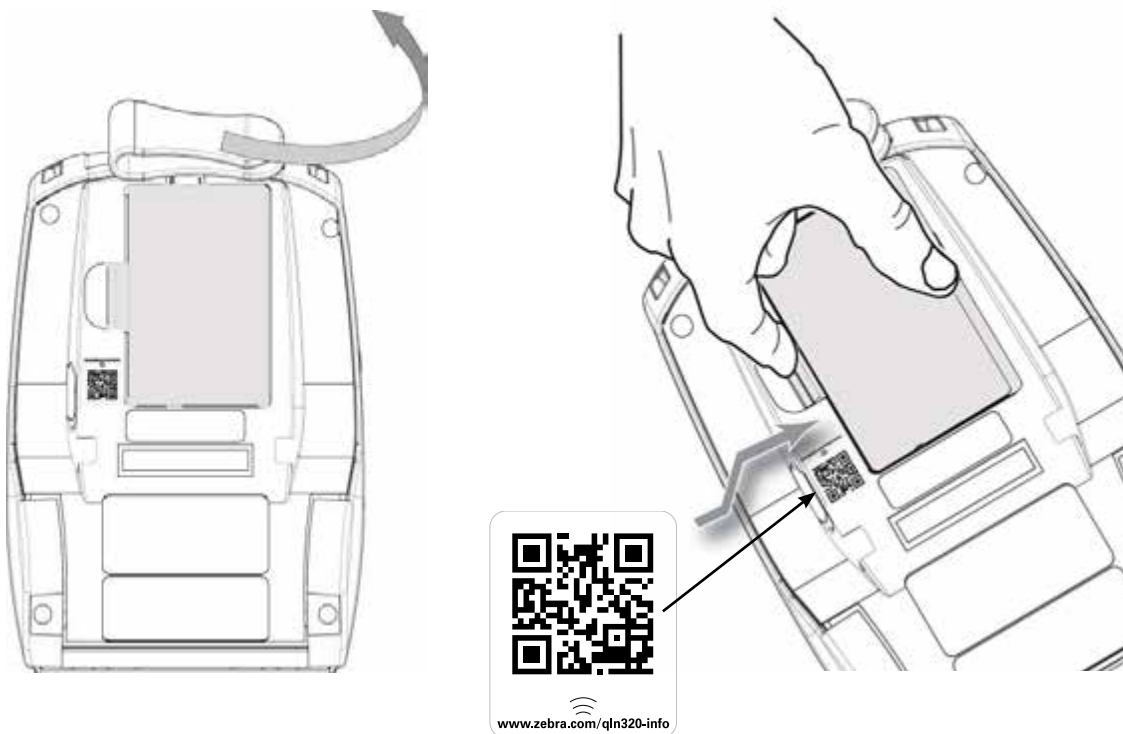
18.	Belt Clip	21.	MAC Address Label
19.	Battery	22.	Docking Contacts
20.	USB/RS232 Comm Ports	23.	DC Input



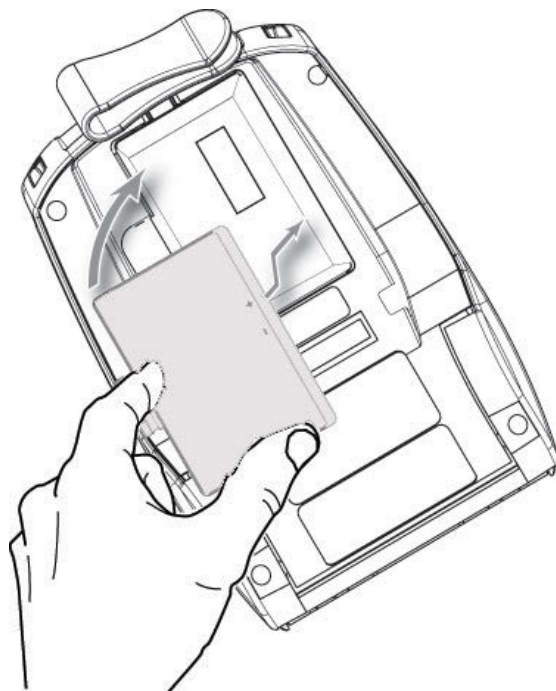
Note: Tapping the Zebra Print Touch™ icon with a Near Field Communication (NFC) enabled smartphone will provide instant access to printer-specific information. For more information about NFC and Zebra products, go to <http://www.zebra.com/nfc>. Bluetooth pairing applications via NFC is also possible. Please see Zebra Multi-platform SDK for more information.



Removing and Installing the Battery



Note: Scanning the QR code with a smartphone will provide printer-specific information at www.zebra.com/qln320-info and www.zebra.com/qln220-info.



Charging the Smart Battery

UCLI72-4 Quad Charger

The UCLI72-4 Quad Charger charges up to four QLn battery packs simultaneously. Batteries must be removed from the printer to be charged in the Quad Charger.



The indicators under the battery will allow you to monitor the charging process per the table below:



Amber	Green	Battery Status
On	Off	Charging
On	Flashing	80% charged (O.K. to use)
Off	On	Completely Charged
Flashing	Off	Fault

Smart Charger-2 (SC2) Single Battery Charger

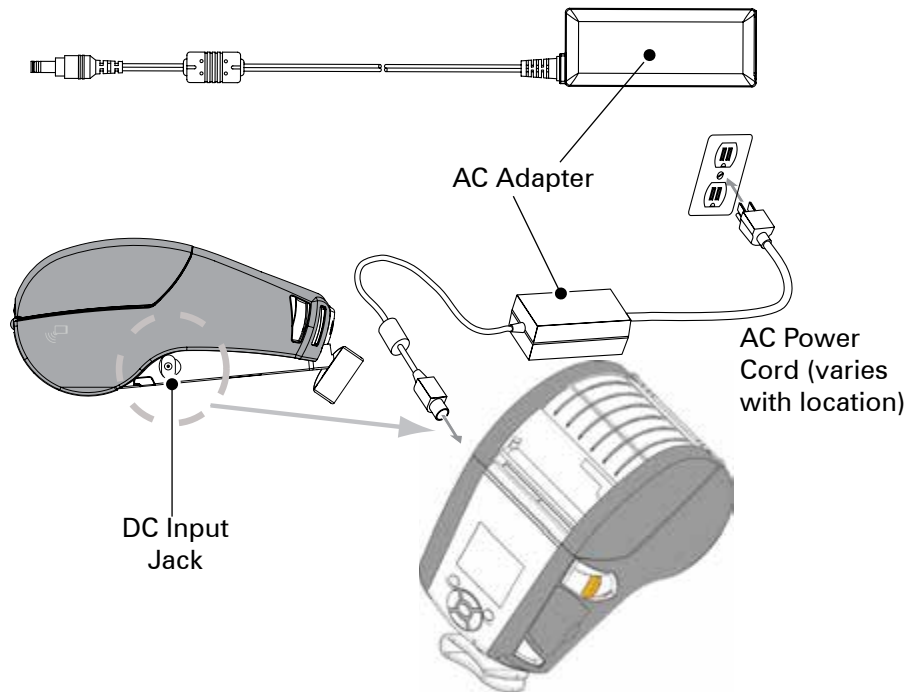


	Green	Yellow	Yellow Flashing	Amber
Charge Status 	Fully Charged	Charging	N/A	Fault
Battery Health 	Good	Capacity Diminished	Past Useful Life	Unusable-Replace Battery



When the SC2 is plugged in but no battery is present, the Charge Status LED indicator will be green.

AC Power Adapter (included in kit p/n P1031365-024)



Batteries are shipped uncharged. Remove protective shrink-wrap and labels from new battery packs and allow them to charge completely prior to initial use.



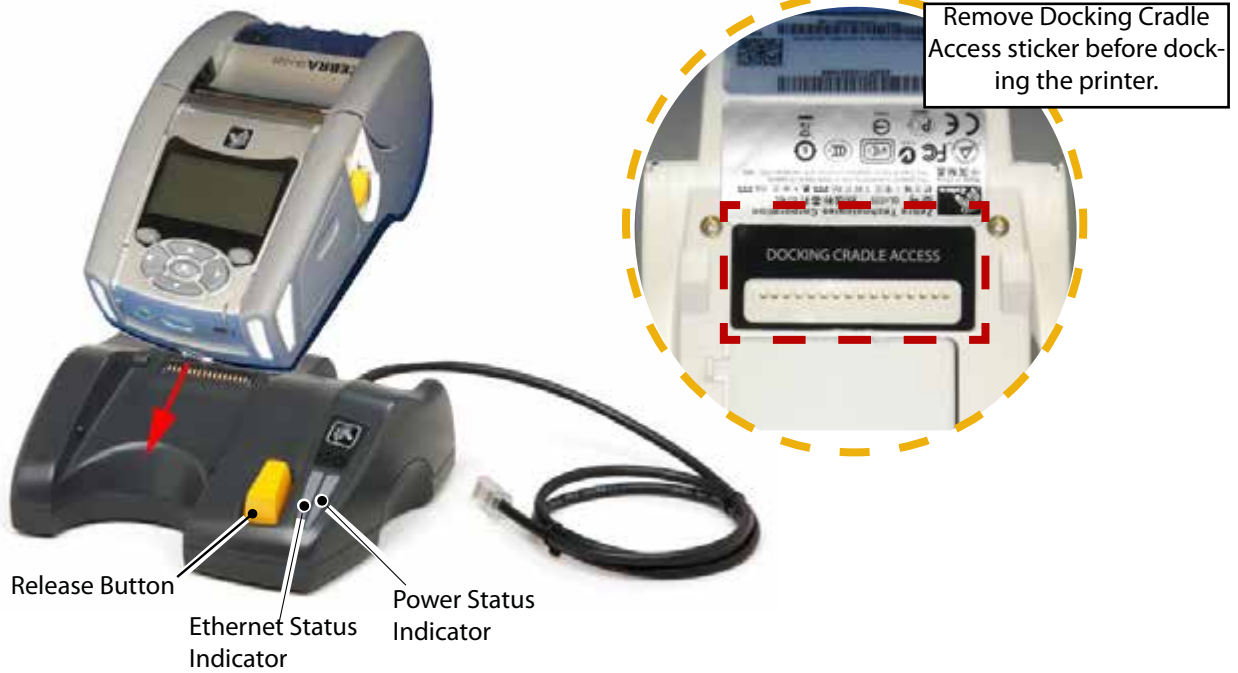
While it's possible to charge the battery when using the printer, charge times will increase under this condition.



The QLn220 and 320 extended capacity battery is not compatible with the QLn-EC and EC4 Ethernet cradles.

Ethernet Cradle

QIn-EC

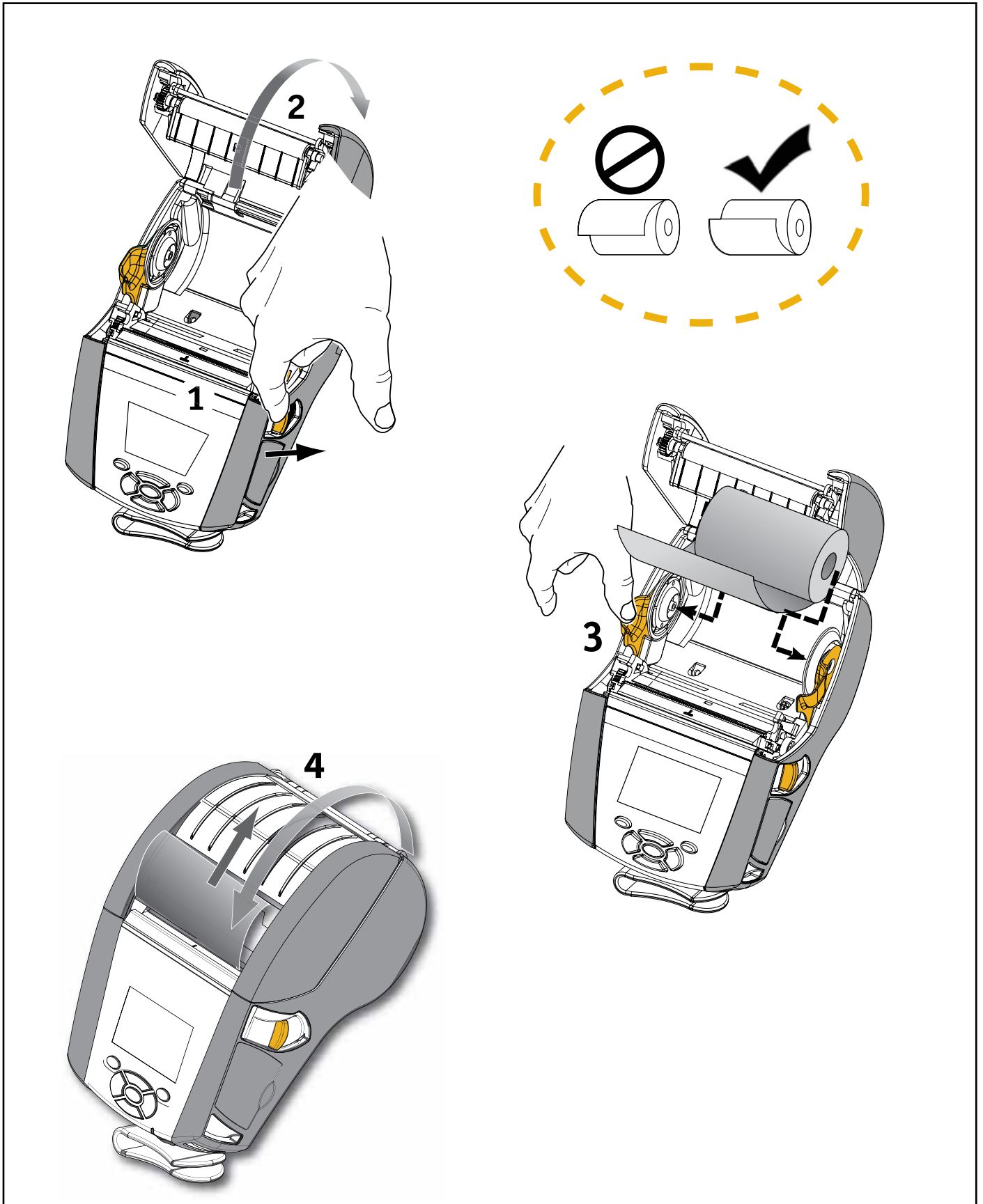


LED Function	LED Status	Indication
Power	Solid Green	Power On
Ethernet	Blinking Green	Ethernet Activity

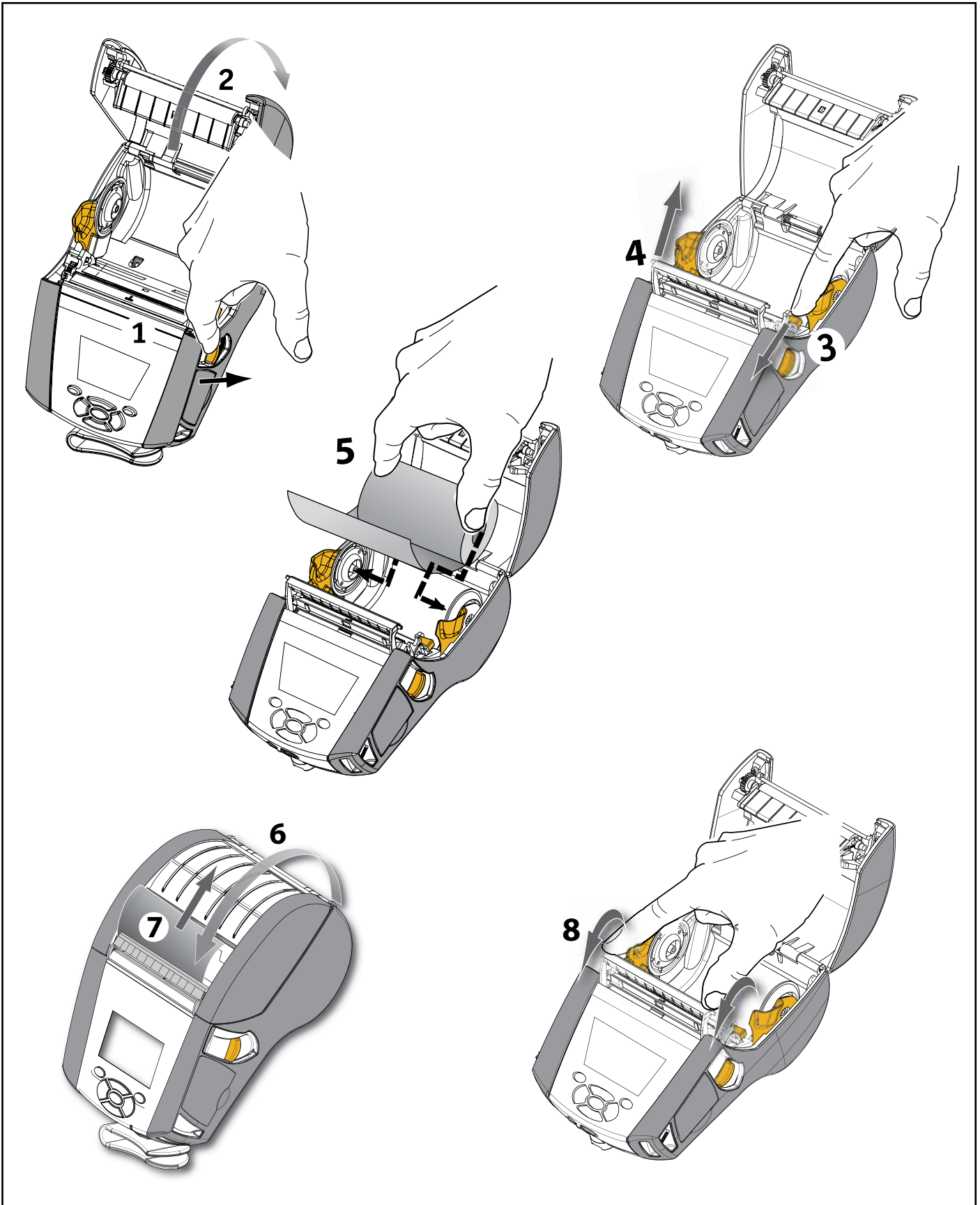
QIn-EC4



Loading Media

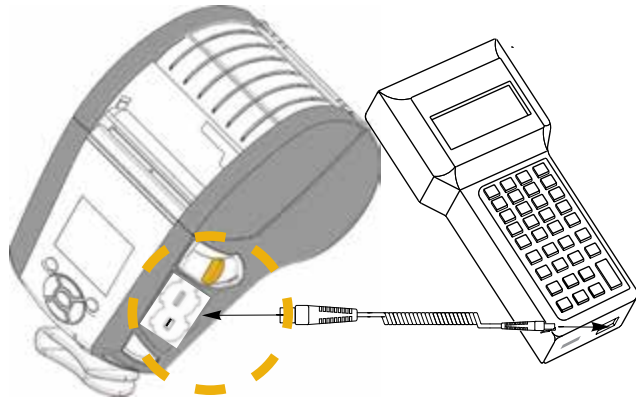


Loading Media (Peeler Activated)

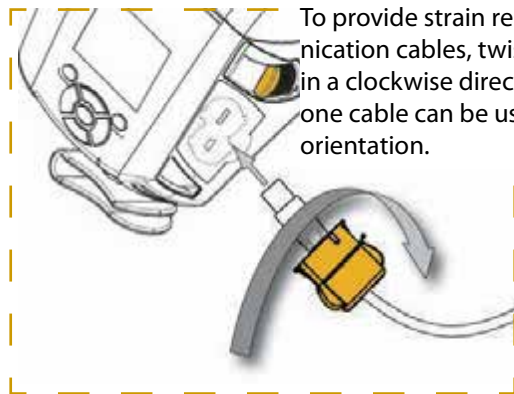
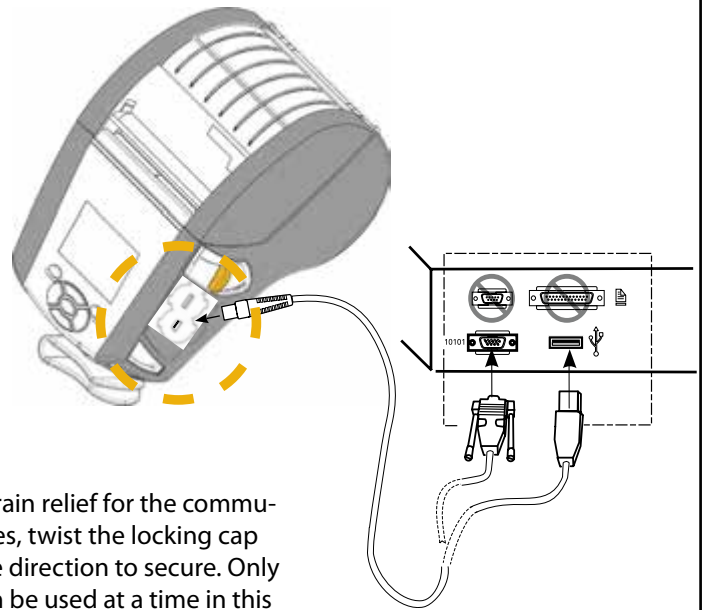


Cable Communications

Via a Terminal



Via a Computer



To provide strain relief for the communication cables, twist the locking cap in a clockwise direction to secure. Only one cable can be used at a time in this orientation.

Via Bluetooth (NFC)

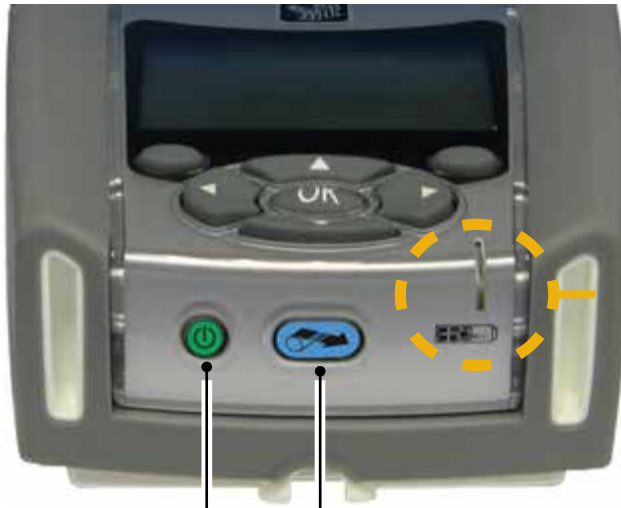


<http://www.zebra.com/nfc>

Made for
iPod iPhone iPad



Printer Controls



LED Charge Indicator

Solid Yellow: Charging

Solid Green: Fully charged

Off: No DC Power Applied

Off: With DC Power Applied: Charge Fault

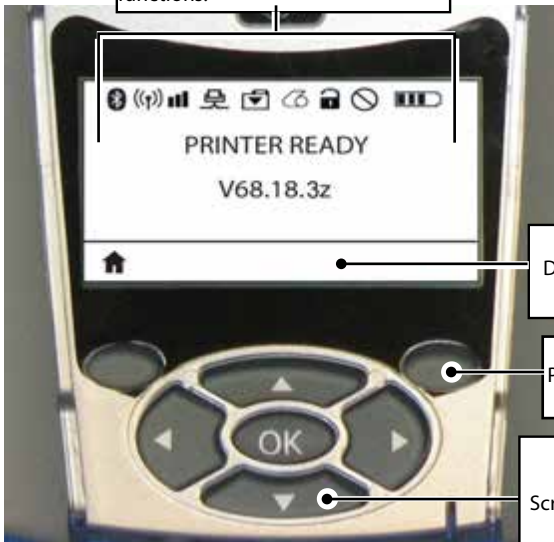


Power Button

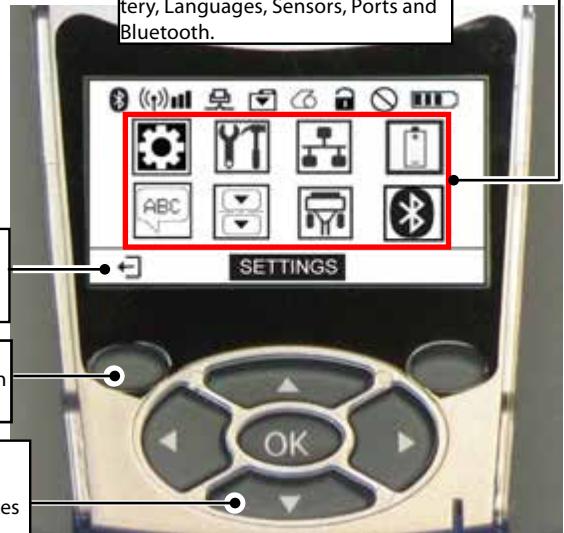


Media Feed Button

Printer Status Bar & Status Screen
Indicates the status of several printer functions.**



Main Menu Screen
Displays graphical options including Settings, Tools, Network, Battery, Languages, Sensors, Ports and Bluetooth.



Navigation Bar
Displays user-selectable options.

Soft Keys
Press to select a function on the Navigation Bar.

Four Way Navigation Buttons
Scroll through menu choices on Status Screen
Press "OK" to enter.

** Not every icon will be displayed on the Status Bar at one time, only those applicable to the printer's configuration.

Cleaning the Printers



For specific QLn Healthcare printer cleaning instructions (P1066640-001), please go to www.zebra.com/manuals and select QLn320 Mobile Printer or QLn220 Mobile Printer from the Printer Support dropdown menu.

Accessories

Hand Strap (P1031365-027)



Shoulder Strap (P1031365-026)

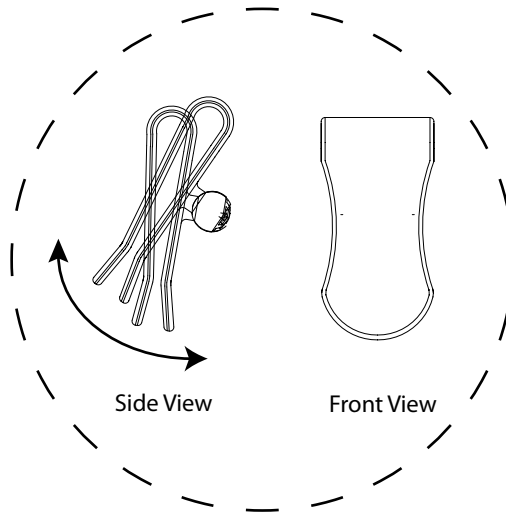
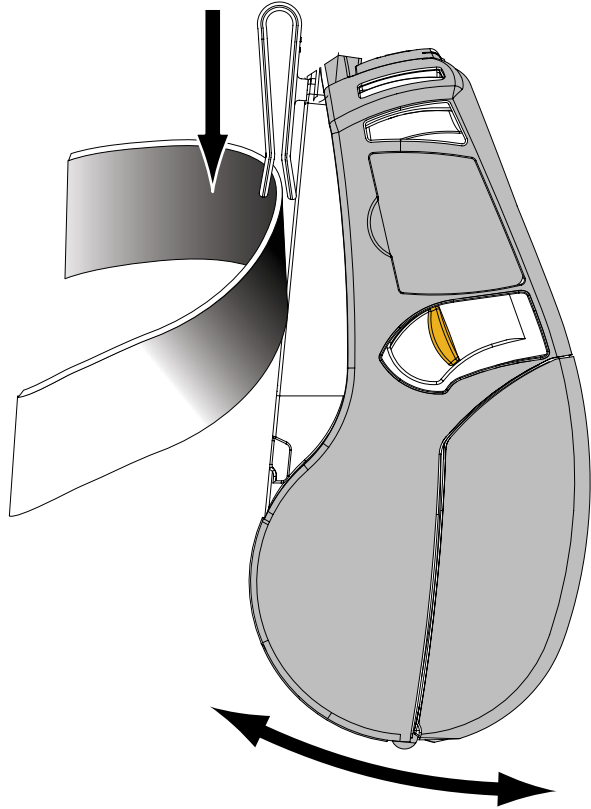


Soft Case (P1031365-029/044)



Accessories cont.

Belt Clip (P1024458-002)



Product Support

For product support, and the latest versions of all customer documentation, contact Zebra Technologies at: www.zebra.com. Refer to Appendix E in the QLn Series User Guide for more detailed contact information

Zebra Technologies Corporation
475 Half Day Road, Suite 500
Lincolnshire, Illinois 60069 USA
Phone: +1.847.634.6700 or +1.866.230.9494
Fax: +1.847.913.8766

Zebra Technologies Europe Limited
Dukes Meadow
Millboard Road
Bourne End
Buckinghamshire SL8 5XF, UK
T: +44 (0)1628 556000
F: +44 (0)1628 556001

Zebra Technologies Asia Pacific, Pte. Ltd.
120 Robinson Road
#06-01 Parakou Building
Singapore 068913
Phone: +65 6858 0722
Fax: +65 6885 0838



Zebra Technologies Corporation
475 Half Day Road, Suite 500
Lincolnshire, IL 60069 USA
T: +1 847.634.6700 or +1 800.423.0442